

# PyMan

System for Supervision, Control, Monitoring and Data Acquisition (SCADA)

Nowadays, companies require monitoring and diagnosis systems for their production processes, **PyMan** is a software package entirely designed by PYSSA, that, working in real-time, multitasking and multi-user, will satisfy the most demanding requirements.

## Advantages

**Efficiency** improvement of your plant; real-time information about all the relevant production system data.

**Management** improvement of your plant; disposing of all the information from your production means. Histories: Globals, partials, temporary, of the line, sections, machine, workman, etc.



## Structure

**PyMan** may be set-up on four different levels, following a pyramidal structure:

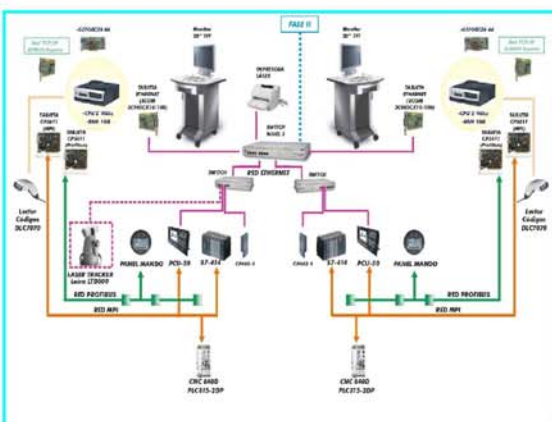
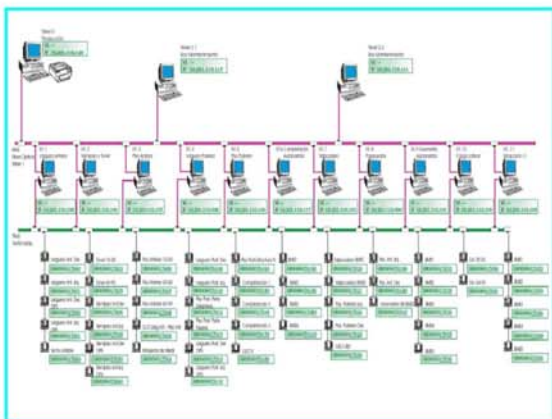
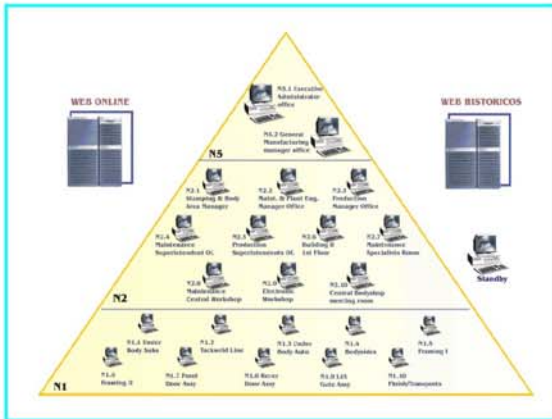
- ▶ LEVEL 0: Controls one machine. The user has complete command of the machine through definition of command desks.
- ▶ LEVEL 1: Designed for control of a group of machines.
- ▶ LEVEL 2: Gathers information of the inferior levels, supervising the different manufacturing areas.
- ▶ LEVEL 5: Supervises the entire plant, receiving information from the levels 2.

# PyMan

System for Supervision, Control, Monitoring and Data Acquisition (SCADA)



## Characteristics



## Reliability

PyMan has a large experience as Industrial SCADA.

## Security

The program gathers information from the PLC's without interfering with their normal functioning and does not present any risk for your installations, nor does it affect the production process.

## Versatility

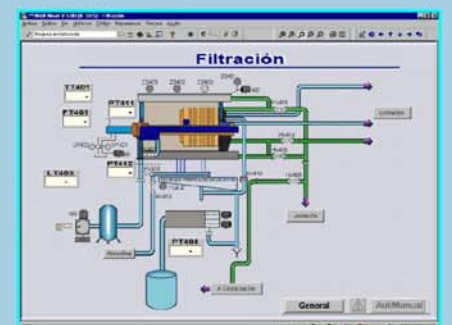
PyMan has drivers prepared for the majority of automats: Siemens, Allen-Bradley, Telemechanique, Omron...

PyMan disposes of links with several databases: Acces, SQL, Oracle, etc.

PyMan may also be integrated with other CRP maintenance management systems.

Trends of any kind of data (speed, production, time...) May be shown graphically.

PyMan's Pyweb allows for access to historics recording from anywhere through the internet.



Head Offices: Sector C, Calle D, 25. Pol. Ind. Zona Franca. E-08040 Barcelona-Spain  
Ph. + 34 935 084 210. Fax + 34 932 634 522. [www.pyssa.com](http://www.pyssa.com)

© Copyright 1997-2005, Proyectos y Soft, S.A. All information of this document may be modified without previous notice.  
PyMan is a registered trademark.